

CRepHS Newsletter

Q4FY24 -
Q1FY25

MESSAGE FROM THE DIRECTOR

Dear Colleagues,

Welcome to the latest newsletter, recognizing our Center's achievements from not one but two quarters—April through September of 2024. Fall has arrived, and in the past 6 months, our Center has made significant strides in research, innovative projects, and collaborative efforts dedicated to advancing reproductive health.

Our team's achievements are a direct reflection of the tireless work that has been done. I invite you all to share in celebrating these victories with each other, because as you will see, there is much to celebrate.

Your ongoing support is essential to our success, and together, we will continue to make a meaningful impact on reproductive health.

Sarah



Sarah K. England, PhD

*Alan A. and Edith L. Wolff Professor of Medicine
Vice Chair of Research and Professor,
Department of Obstetrics and Gynecology*

IN THIS ISSUE

PERSONNEL UPDATE 
p 2

PERSONNEL SPOTLIGHT 
p 3-4

UPCOMING
OPPORTUNITIES 
p 5-6

SCIENTIFIC
ACCOMPLISHMENTS 
p 7-12

COLLABORATIONS 
p 13

CENTER INFORMATION 
p 14

Next issue: January 2025

PERSONNEL UPDATE

NEW TEAM MEMBERS

JOSHUA BRILL, MD
Clinical Fellow, Mullen Lab

SHERITA JOHNSON
Histology Technician I

PRANEETH KANDUGULA
Bioinformatics Research Assistant, Wang Lab

JORDYN LEHR
Clinical Research Coordinator II, Wang Lab

SEUNGBAEK LEE, PHD
Postdoctoral Research Associate, Gomez-Lopez Lab

ZHONGYU LUO
Bioinformatics Research Assistant, Wang Lab

DAVI MARTINS, PHD
Postdoctoral Research Associate, Mullen Lab

BRIDGET PERKINS
Clinical Research Financial Coordinator

ANGELA SCHAB, PHD
Postdoctoral Research Associate, Mullen Lab

QIUCHANG SUN, PHD
Postdoctoral Research Associate, Wang Lab

YI XU, PHD
Senior Scientist, Gomez-Lopez Lab

MANDI ZHANG
Grant Specialist I



BRILL



JOHNSON



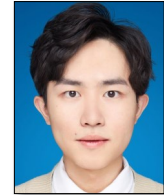
KANDUGULA



LEHR



LEE



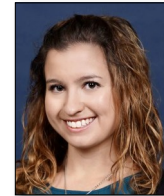
LUO



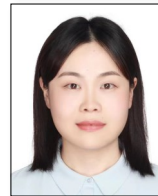
MARTINS



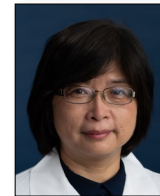
PERKINS



SCHAB



SUN



XU



ZHANG

UNDERGRADUATE RESEARCHERS

RIDDHI BADHAN
KAREN CANSECO
JENNY CHANG
ETHAN LI
CICI LIN
ANNA LIU
TANISHA PAUL

JULIA PATTERMANN
SMRITHI RAMESH
EDDY RAMIREZ
JORDAN RICH
JO SAMUELS
TANISH SATHISH
SYDNEY SHEA



Kim Johnson
(Lab Support)

MILESTONE AWARDS

Congratulations to our 2025 WashU Med School Campus “[Staff Service Milestone Award](#)” recipients!



Viju Gupta
(Khabele Lab)

PERSONNEL Spotlight

Valene Garr Barry, PhD
Instructor



Valene Garr Barry, PhD is the newest faculty member to join the Center for Reproductive Health Sciences, transitioning from a Postdoctoral Research Scholar to an Instructor with the OBGYN department in July 2024.

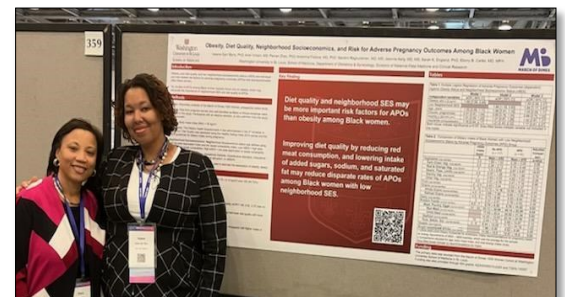
Dr. Garr Barry received her PhD in Nutrition Sciences from the University of Alabama at Birmingham and she completed a postdoctoral fellowship here at Washington University in the Transdisciplinary Postdoctoral Training Program in Obesity and Cardiovascular Disease. During her postdoc she was co-mentored by our very own Dr. Sarah K. England, Director for the Center for Reproductive Health Sciences, and Dr. Ebony Carter, former Chief of the Division of Clinical Research in OBGYN.



August 2024 cover of *Obstetrics & Gynecology* (The Green Journal) , featuring Dr. Garr Barry's research.

Regarding her postdoc experience, Dr. Garr Barry says, “Working with Dr. Carter was incredibly helpful. She's an MFM, and she views things through a different lens. What I got to do was sharpen my idea and the way I communicate the science.” Dr. Garr Barry’s postdoc project with Dr. Carter titled, “Individual-Level and Community-Level Predictors of Healthy Pregnancy Outcomes in Multigravid Black Women” has recently been published in *Obstetrics & Gynecology* (The Green Journal) and is featured on the cover of the journal’s August edition.

As Dr. Garr Barry transitions from postdoc to faculty, she has been awarded a KL2 Career Development Award through the Institute for Clinical and Translational Sciences. Dr. Garr Barry’s lab will focus on precision nutrition, with an emphasis on fluid and nutrient metabolism in high-risk pregnancies, particularly those with hypertensive disorders and fetal growth restriction. Her active research projects focus on 1) incorporating wearable and remote technologies into the monitoring of high cardiovascular risk pregnancies, and 2) developing precision nutrition-based interventions for fetal growth restriction among Black women.



Dr. Ebony Carter with Dr. Garr Barry presenting a poster at the 2023 SMFM Conference

Continued on next page...

PERSONNEL Spotlight

...continued

Valene Garr Barry, PhD
Instructor



When asked about the future and what drives her to do what she does, Dr Garr Barry states that her long-term goal is to build a center that focuses on maternal metabolism research in women of color. She says that “the seminal studies of metabolism in pregnancy did not include women of color... the work just hasn't been done.” When asked about her motivation, she passionately states, “I believe my hypotheses are correct, and I don't think that nutrition in utero, and exposure to obesity and inflammation work in tandem with poor early childhood lifestyle to create a negative

feedback loop for cardiometabolic disease.” She believes that the lack of targeted nutrition and metabolism research among women of color, particularly Black American women, obfuscates a critical part of the maternal morbidity and mortality crisis facing America and limits efforts to reduce racial disparities. Thus, Dr. Garr Barry is dedicated to bridging the knowledge gaps pertaining to metabolism in pregnancy both within medicine and in communities.

“I want to be recognized as a scientist that does rigorous, unbiased research, and when my colleagues read my work I want them to trust that I've done my best.”

-Dr. Garr Barry

Concerning her new role and lab, Dr. Garr Barry says “I'm excited. This is the culmination of years of hard work, but also the beginning of many years to come. I want to be recognized as a scientist that does rigorous, unbiased research, and when my colleagues read my work I want them to trust that I've done my best. I'm hopeful that being a part of CRepHS gives me an opportunity to start to build that reputation. I'm excited to grow and collaborate with the other researchers here in CRepHS and across WashU. I completely intend to give it 100 and 10 percent.” ■

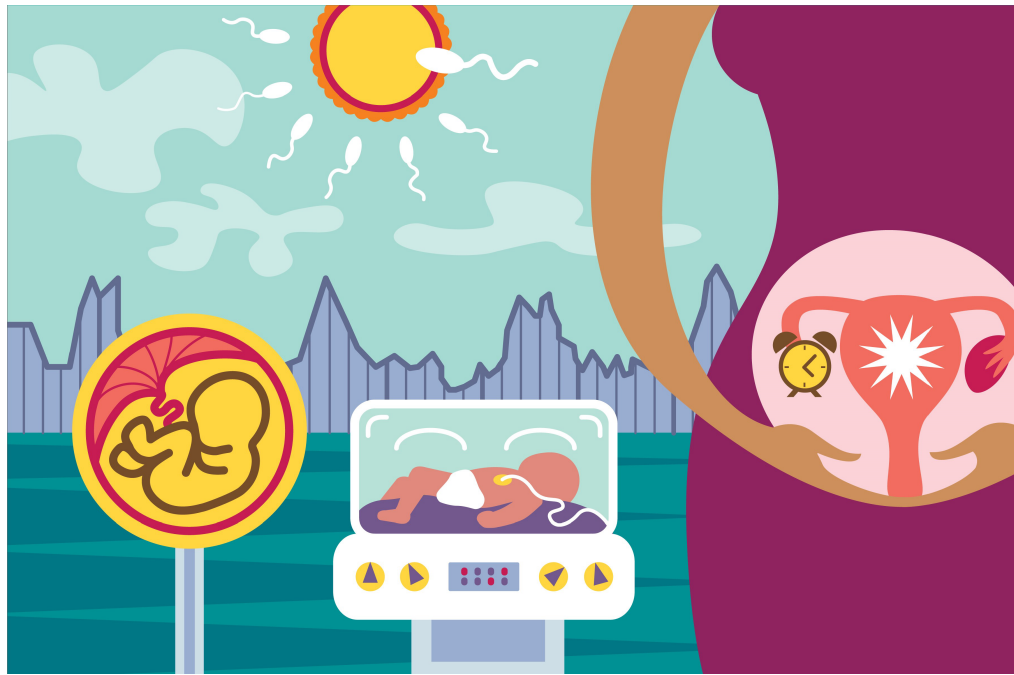


Dr. Garr Barry after giving closing remarks at the Black Girls Do STEM 2024 event at the McKelvey School of Engineering.

UPCOMING OPPORTUNITIES

REPRODUCTIVE SCIENCES MASTER'S PROGRAM

A new Master of Science in Reproductive Sciences (MSRS) program is launching at WashU! The MSRS program's Director and Associate Director, Dr. Erin Reinl and Dr. Ali Ahmady, respectively, are leading this distinctive program on the School of Medicine campus. The program's leadership is thrilled to be building and strengthening collaborations with dozens of WashU faculty, clinicians, and more, to provide worldclass graduate education in the field of reproductive sciences.



Artwork by Eric Young

Applications are open now for students interested in the MSRS “research” concentration. The first cohort begins in fall of 2025. Students accepted into the research concentration will complete the program in 21 months. Another program concentration, “clinical embryology,” will be open to applicants in fall of 2026.

Our program trains scientists to improve the nation’s growing reproductive healthcare needs. Learn more about our biosciences degree that focuses on human reproductive biology by going to [our website](https://sites.wustl.edu/reproductivesciences/).



<https://sites.wustl.edu/reproductivesciences/>

UPCOMING OPPORTUNITIES

CREPHS SEMINAR SERIES

Most Fridays of the academic year, CRepHS hosts internal and external leaders in the field of reproductive health research. [For the full schedule, click here.](#)



Friday, November 22nd, 9 a.m. >>> Maria Battistone, PhD; *Harvard*

Friday, December 6th, 9 a.m. >>> Roger Young, MD, PhD; *PreTel Inc.*

Friday, December 13th 9 a.m. >>> Benjamin Bitler, PhD; *University of Colorado*

Friday, December 20th 9 a.m. >>> Seungbaek Lee, PhD; *WashU (Gomez-Lopez lab)*

FUNDING

- The NIH Loan Repayment Programs can counteract educational debt of researchers in return for a commitment to engage in NIH mission-relevant research. Find out more at www.lrp.nih.gov.
- [The CRepHS Travel Award](#): This award aims to provide support for expenses for conferences where students or trainees are presenting their research. Applications are accepted on a rolling basis.
- [ICTS Clinical and Translational Research Funding Program \(CTRFP\)](#): This grant funding program awards projects that promote the translation of scientific discoveries into improvement in human health.
- The “[Pilot & Feasibility Program](#),” from the WashU Nutrition Obesity Research Center, provides research support to test innovative hypotheses involving nutrition and obesity in the prevention, pathogenesis, pathophysiology, and therapy of disease.
- [Grants from the Elsa U. Pardee Foundation](#) fund research directed toward identifying new treatments or cures for cancer.
- [The QuikSTART Grant program](#) from the Center for Drug Discovery (CDD) and the Siteman Cancer Center is designed to advance the translation of new discoveries in cancer disease biology into small molecule therapeutics for the benefit of patients.
- Repro Grants (www.reprogrants.org) offers fast funding for female reproductive science.



View more
funding relevant
to researchers in
OBGYN by
[clicking here.](#)

SCIENTIFIC ACCOMPLISHMENTS

DR. DAVID ROTHMAN RESIDENT RESEARCH SYMPOSIUM



On May 1st, the Obstetrics and Gynecology department hosted the prestigious Rothman Research Symposium. Each resident is required to complete one publishable clinical or basic science research project during their residency, culminating in a presentation at the Symposium. Fellows and basic research trainees are also encouraged to present. This year, the winners for each category were resident Melissa Cantave, MD, fellow Whitney Grither, MD, PhD, and postdoc **Magdaleena Mbadhi, MBBS, MMed** from the Frolova lab. Congratulations, all!

To learn more about this symposium, visit the OBGYN [website page here](#).

DR. JACOB PROBSTEIN VISITING PROFESSOR LECTURE

CRepHS recently hosted our [2024 Dr. Jacob Probstein Visiting Professor Dr. Kristina Adams Waldorf](#), Professor of Obstetrics and Gynecology at the University of Washington, on October 8th and 9th. Her research presentation was titled, “Unraveling Biology at the Maternal-Fetal Interface: Preterm Birth Studies in a Nonhuman Primate” and her Grand Rounds lecture was titled, “What the Placenta May Face in the Next Pandemic.” Dr. Adams Waldorf met with many CRepHS faculty, trainees, and potential collaborators throughout her visit and a wonderful time was had by all!



THE 49TH ANNUAL OBGYN SYMPOSIUM



The 49th Annual OBGYN Symposium, held October 24-25th, featured Drs Pelin Batur and Tiffany Moore-Simas as Keynote speakers. Learn more about the symposium by visiting the [website page here](#).

SCIENTIFIC ACCOMPLISHMENTS

AWARDS & APPOINTMENTS

- In June, **Dr. Nardhy Gomez-Lopez** and her team received a four-year, \$500,000 award from the [Burroughs Wellcome Fund](#) to further research into the immunobiology of the maternal-fetal interface and identify biomarkers to predict preterm labor and birth.
- Postdoctoral Research Associate **Magdaleena Mbadhi MBBS, MMed** from the Frolova lab received the Rothman Research Basic Science Project award for her presentation at the department's [2024 Rothman Research Day](#).
- Postdoctoral Research Associate in the Santi lab, **Shweta Bhagwat, PhD**, received the L.A.B. award. This internal funding mechanism is for one-year pilot grants for up to \$10,000 for clinical or translational research in women's health. [Check it out here](#).
- Dr. Farners Amargant i Riera** and CWHE PI Dr. Alexandra Rutz received a [Collaboration Initiation Grant in Women's Health Technologies](#). This initiative seeks to apply engineering technology to develop novel strategies to improve the detection, diagnosis and treatment of conditions affecting the female reproductive system.
- Kaci Martin**, PhD student in the Frolova Lab, received the [Rosalind Kornfeld Student Leadership Award](#) from the Academic Women's Network in April. Also in April, Kaci received the DBBS "Student Group Member of the Year" award and the "Excellence in Research" award, and **Dr. Toni Frolova** received the DBBS "Outstanding Faculty Member" award.
- On April 7th, **Dineo Khabele, MD**, was inducted to the [Association of American Physicians](#) (AAP) in recognition of her contributions to research improving health care.
- Farners Amargant i Riera, PhD**, Assistant Professor of Obstetrics and Gynecology, received a [Pilot and Feasibility Award from the Washington University Diabetes Research Center](#) (DRC). The new grant provides funding through March 31, 2025, for her research titled "Diabetes-associated mechanism of female subfertility: role of the ovarian stroma."
- Senior Scientific Editor to the department, **Debbie Frank, PhD** was awarded the 2024 [WUSM Research Support Award](#) for her tireless efforts in helping make OBGYN research world-class.
- Viju Gupta, PhD**, and **Audrey Johnston, MBA**, graduated from the [WashU Emerging Leaders Program](#), sponsored by the Institute for Leadership Excellence on May 1st.



Dr. Shweta Bhagwat



Dr. Frolova and Kaci Martin



Dr. Debbie Frank

*CRepHS PIs and members in bold.

SCIENTIFIC ACCOMPLISHMENTS

AWARDS & APPOINTMENTS *...continued*

- This July, Postdoc **Sara Pietroforte, PhD** of the Amargant i Riera lab received the Trainee Research Award for her poster titled “The Age-Associated Increase in Ovarian Stiffness Impairs Follicle Development and Oocyte Quality Through Early Modulation of Follicles’ Transcriptome” at the [Society for the Study of Reproduction](#) (SSR) 57th annual meeting in Dublin Ireland.
- **Mary M. Mullen, MD**, with mentors **Dineo Khabele, MD**, and Nima Mosammamarast, MD, PhD, has been named a [Damon Runyon Clinical Investigator](#) by the Damon Runyon Cancer Research Foundation. Each Awardee will receive \$600,000 over three years, as well as assistance with research costs such as the purchase of equipment. Because the need to repay medical school loans is often cited as a deterrent to pursuing research, Damon Runyon will also retire up to \$100,000 of medical school debt owed by the awardee.
- **Dr. Amargant i Riera** received an [OVCR Seed Grant for Interdisciplinary Research](#) with co-PI Dr. Matthew Bersi. Their project is titled, “Biomechanics as a novel non-invasive biomarker of oocyte meiotic potential.”
- The **Amargant i Riera** lab was awarded an Ovarian Cancer Research Innovation Award (OCRI), titled “Accelerated ovarian fibrosis: a mouse strain-dependent analysis”
- Dr. Nandini Raghuraman and **Dr. Toni Frolova** were awarded a [multi-PI Ro1 studying uterine contractility in labor](#). The team will be awarded 2.7 million over 5 years for a clinical and translational study investigating how oxytocin should be dosed and how the uterus should contract in response to oxytocin during induction of labor.
- Assistant Professor **Maggie Mullen, MD** received a grant from the Center for Drug Discovery and Siteman Cancer Center. It is titled “Optimizing a therapeutic inhibitor of COPS5 that synergizes with platinum chemotherapy”.
- **Dr. Maggie Mullen** is also co-investigator on an award from the American Cancer Society titled, “Overcoming genome instability in BRCA1 mutant carriers by increasing BRCA2 mRNA translation”
- **Valene Garr Barry, PhD** received the Burroughs Wellcome Fund PRS Early Career Speaker at the [Perinatal Research Society 2024 Meeting](#) with her talk, “A Precision Nutrition Approach to Disparities in Fetal Growth Restriction.”



Dr. Sara Pietroforte



Dr. Farners Amargant i Riera



(L-R): Dr. Angela Schab, Dr. Elena Lomonosova, Jaeden Barron, Dr. Davi Martins, Dr. Maggie Mullen, Maggie Loeb

***CRepHS PIs and members in bold.**

SCIENTIFIC ACCOMPLISHMENTS

AWARDS & APPOINTMENTS *...continued*

- Postdoctoral Research Associate from the Mullen lab, **Angela Schab, PhD** is a trainee on the T32 mechanism titled, “Molecular Oncology Training Grant” under PI Dr. Lee Ratner.
- **Dr. Gomez-Lopez** received an R01 Grant for “T Cells and IL-9 Signaling at the Maternal-Fetal Interface in Preterm Labor and Birth”. Her team will be awarded 2.7 million over 5 years. [Check it out here.](#)

PRESENTATIONS

- **Dr. Erin Reinl** and **Dr. Sarah England** presented "Ion Channels: Teaching About Excitability in Non-Traditional Tissues" at the annual Human Anatomy and Physiology Society meeting in St. Louis.
- MD/PhD student **Dustyn Levenson** in the Gomez-Lopez Lab was selected to present her work in a Block Symposium at “Immunology 2024,” the annual meeting of the American Association of Immunologists (AAI), and received a 2024 AAI Trainee Abstract Award.
- Senior Scientist in the Khabele lab **Dr. Viju Gupta** had her abstract selected for a talk at the Rivkin-AACR meeting held in Seattle on Sept 20-21, 2024. She presented a talk and a poster on the "Role of HDAC3 inhibition in ovarian cancer" in the Emerging therapeutics session.



Dustyn Levenson

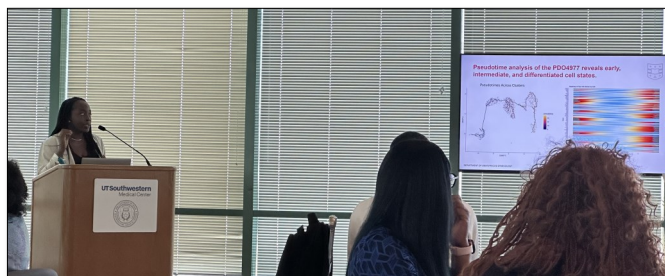


Dr. Erin Reinl



Dr. Viju Gupta

- Instructor **Valene Garr Barry, PhD** presented her research at the National Black Postdoctoral Symposium. The talk was titled, “Obesity, Diet Quality, Neighborhood Socioeconomics and Risk for Adverse Pregnancy Outcomes Among Black Women”
- Postdoctoral Research Associate in the Khabele lab **Bisi Fashemi, PhD** gave a talk titled 'Single-Cell Transcriptomic Signatures of Ovarian Cancer Patient-Derived Organoids and Patient Tumors' at the National Black Postdoc Association Leadership Symposium, Oct 23-25.
- Assistant Professor **Mary Mullen, MD** presented “COPS5 inhibition targets nucleotide excision repair and homologous recombination to synergize with platinum chemotherapy” at the 15th Biennial Ovarian Cancer Research Symposium in Seattle, WA in September.



Dr. Bisi Fashemi presenting at the National Black Postdoc Association Leadership Symposium.

*CRepHS PIs and members in bold.

SCIENTIFIC ACCOMPLISHMENTS

PUBLICATIONS*

- **Amargant F**, Magalhaes C, Pritchard MT, Duncan FE. [Systemic low-dose anti-fibrotic treatment attenuates ovarian aging in the mouse](#). Geroscience. 2024 Sep 16. doi: 10.1007/s11357-024-01322-w. Epub ahead of print. PMID: 39285140.
- **Mullen MM**, Grither WR, Millimet H, Mutch DG, Hagemann AR, McCourt CK, Powell MA, H Thaker P, **Khabele D**, Kuroki LM. [Prophylactic antibiotics for excision of premalignant vulvar lesions: A pilot randomized controlled trial](#). Gynecol Oncol Rep. 2024 Aug 8;55:101476. doi: 10.1016/j.gore.2024.101476. PMID: 39229484; PMCID: PMC11369441.
- Hoyniak CP, Donohue MR, Luby JL, Barch DM, **Zhao P**, Smyser CD, Warner B, Rogers CE, Herzog ED, **England SK**. [The association between maternal sleep and circadian rhythms during pregnancy and infant sleep and socioemotional outcomes](#). Eur Child Adolesc Psychiatry. 2024 Aug 24. doi: 10.1007/s00787-024-02571-y. Epub ahead of print. PMID: 39180688.
- Nesic K, Kraiss JJ, **Wang Y**, Vandenberg CJ, Patel P, Cai KQ, Kwan T, Lieschke E, Ho GY, Barker HE, Bedo J, Casadei S, Farrell A, Radke M, Shield-Artin K, Penington JS, Geissler F, Kyran E, Betsch R, Xu L, Zhang F, Dobrovic A, Olesen I, Kristeleit R, Oza A, McNeish I, Ratnayake G, Traficante N; Australian Ovarian Cancer Study; DeFazio A, Bowtell DDL, Harding TC, Lin K, Swisher EM, Kondrashova O, Scott CL, Johnson N, Wakefield MJ. [BRCA1 secondary splice-site mutations drive exon-skipping and PARP inhibitor resistance](#). Mol Cancer. 2024 Aug 5;23(1):158. doi: 10.1186/s12943-024-02048-1. PMID: 39103848; PMCID: PMC11299415.
- **Wu W**, **Sun Z**, **Gao H**, **Nan Y**, Pizzella S, **Xu H**, **Lau J**, **Lin Y**, Wang H, Woodard PK, Krigman HR, Wang Q, **Wang Y**. [Whole cervix imaging of collagen, muscle, and cellularity in term and preterm pregnancy](#). Nat Commun. 2024 Jul 19;15(1):5942. doi: 10.1038/s41467-024-48680-9. PMID: 39030173; PMCID: PMC11271604.
- **Garr Barry V**, Martin SL, Schneider-Worthington C, **Zhao P**, Woolfolk CL, Foraker R, Davis KL, Kelly JC, Raghuraman N, **England SK**, Carter EB. [Individual-Level and Community-Level Predictors of Healthy Pregnancy Outcomes in Multigravid Black Women](#). Obstet Gynecol. 2024 Aug 1;144(2):241-251. doi: 10.1097/AOG.0000000000005634. Epub 2024 Jun 6. PMID: 39024647.
- **Ferreira JJ**, **Kent LN**, **McCarthy R**, Butler A, **Ma X**, **Peramsetty N**, Amazu C, **Zhang A**, **Whitter GC**, **England SK**, **Santi CM**. [SLO2.1/NALCN Functional Complex Activity in Mouse Myometrial Smooth Muscle Cells During Pregnancy](#). bioRxiv [Preprint]. 2024 Jun 2:2024.05.29.596465. doi: 10.1101/2024.05.29.596465. PMID: 38853884; PMCID: PMC11160795.
- Feyaerts D, Marić I, Arck PC, Prins JR, **Gomez-Lopez N**, Gaudillière B, Stelzer IA. [Predicting Spontaneous Preterm Birth Using the Immunome](#). Clin Perinatol. 2024 Jun;51(2):441-459. doi: 10.1016/j.clp.2024.02.013. Epub 2024 Apr 4. PMID: 38705651.

*CRepHS PIs and members in bold.

SCIENTIFIC ACCOMPLISHMENTS

PUBLICATIONS* *...continued*

- Bligard KH, Kelly JC, **Frolova AI**, Odibo AO, Raghuraman N. [Peripartum Prediction of Fetal Weight in Gravidas With Obesity](#). J Ultrasound Med. 2024 Jul 12. doi: 10.1002/jum.16523. Epub ahead of print. PMID: 38994809.
- **Graham O, Rodriguez J, Abbott R, Lomonosova E, Fashemi B, Drexler R**, Grither W, **Rodriguez K, Compadre A, Loeb M**, Sanders B, Kuroki L, Hagemann AR, McCourt C, Thaker PH, Fuh K, Powell MA, Hagemann IS, Mutch DG, **Khabele D, Mullen MM**. [A toolkit for a modern gynecologic oncology tissue bank](#). Gynecol Oncol. 2024 Oct;189:1-8. doi: 10.1016/j.ygyno.2024.07.001. Epub 2024 Jul 5. PMID: 38971004.
- **Pietroforte S, Plough M, Amargant F**. [Age-associated increased stiffness of the ovarian microenvironment impairs follicle development and oocyte quality and rapidly alters follicle gene expression](#). bioRxiv [Preprint]. 2024 Jun 10:2024.06.09.598134. doi: 10.1101/2024.06.09.598134. PMID: 38915651; PMCID: PMC11195110.
- **Prifti KK, McCarthy R, Ma X**, Finck BN, **England SK, Frolova AI**. [Obese mice have decreased uterine contractility and altered energy metabolism in the uterus at term gestation†](#). Biol Reprod. 2024 Sep 14;111(3):678-693. doi: 10.1093/biolre/ioae086. PMID: 38857377; PMCID: PMC11402524. ***Selected as Editor's Choice***
- Mamah D, Patel A, Chen S, **Wang Y**, Wang Q. [Diffusion Basis Spectrum Imaging of White Matter in Schizophrenia and Bipolar Disorder](#). bioRxiv [Preprint]. 2024 Jul 7:2024.07.07.602402. doi: 10.1101/2024.07.07.602402. PMID: 39005300; PMCID: PMC11245098.
- Uomoto M, **Ota Y**, Suzuki Y, Yumori A, Narimatsu H, Koizume S, Sato S, Nakamura Y, Myoba S, Ohtake N, Saji H, Miyagi E, Miyagi Y. [Tissue factor pathway inhibitor 2 as a serum biomarker for endometrial cancer: a single-center retrospective study](#). BMC Cancer. 2024 Aug 27;24(1):1058. doi: 10.1186/s12885-024-12827-0. PMID: 39192208; PMCID: PMC11351603.
- Than NG, Romero R, Fitzgerald W, Gudicha DW, **Gomez-Lopez N**, Posta M, Zhou F., Bhatti G, Meyyazhagan A, Awonuga AO, Chaiworapongsa T, Matthies D, Bryant DR, Erez O, Margolis L, Tarca AL. [Proteomic Profiles of Maternal Plasma. Extracellular Vesicles for Prediction of Preeclampsia](#). Am J Reprod Immunol. 2024 Oct;92(4):e13928. doi: 10.1111/aji.13928. PMID: 39347565.
- Stevenson DK, Winn VD, Shaw GM, **England SK**, Wong RJ. [Solving the Puzzle of Preterm Birth](#). Clin Perinatol. 2024 Jun;51(2):291-300. doi: 10.1016/j.clp.2024.02.001. Epub 2024 Mar 8. PMID: 38705641.
- Lowder JL, **Zhao P**, Bradley MS, Giugale LE, Xu H, Abramowitch SD, Bayly PV. [Preoperative prolapse phenotype is predictive of surgical outcome with minimally invasive sacrocolpopexy](#). Am J Obstet Gynecol. 2024 Sep;231(3):332.e1-332.e12. doi: 10.1016/j.ajog.2024.04.017. Epub 2024 Apr 18. PMID: 38642697.

*CRepHS PIs and members in bold.

CRepHS COLLABORATIONS

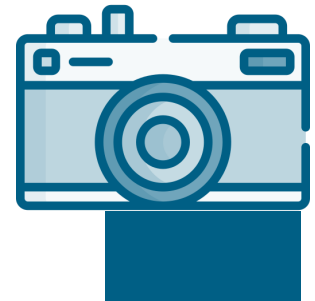


On July 28th: **CRepHS Picnic** The whole division managed to put away the pipettes and get together with their families to eat, play games, and enjoy the warm weather in Tower Grove Park! Clockwise from upper left: 1) Kellie Thompson, Dr. Nardhy Gomez-Lopez, and Audrey Johnston, 2) Dr. Dineo Khabele, Dr. Sarah England, and Kellie Thompson, 3) Dr. Valene Garr Barry, Brad Norman, Andre Guthrie, and Dr. Maggie Mbadhi, 4) Dr. Yuki Ota with baby Emma, 5) Dr. Toni Frolova with baby Sydney and Dr. Maggie Mullen with baby Elle, 6) Dr. Peinan Zhao, Dr. Sarah England, and Dr. Erin Reinl with baby Joseph, 7) August Ackerman. All these beautiful photos were graciously taken by Christina Yin, wife of Dr. Zhao. Thanks to everyone for a wonderful day!



On May 17th: **CRepHS Clothing Swap and Donation Drop**

Members from CRepHS brought spring cleaning to work, allowing for everyone to shop for free before remaining items were donated to charity.



We welcome new faces and collaborations! The next meeting will be our annual CRepHS holiday potluck party. Contact [Audrey Johnston](#) to learn more.

SOCIAL CONNECTIONS



X

[@DKhabeleMD](#)

[@Englandsk785](#)

[@FrolovaToni](#)

[@MaggieMullenLab](#)

[@santi_lab](#)

[@WashU_OBGYN](#)

[@yongwangwashu](#)

[@nardhygomez](#)

[@FarnersRiera](#)



Instagram

[@england.sk](#)

[@washu](#)

[@washumedicine](#)

[@washuobgyn](#)

COLLABORATE WITH US

Join us for CRepHS Monthly Center Collaboration Meetings, held on the 10th floor of the BJC-IOH building. Contact Caitlyn Bolozky and Audrey Johnston to learn more.

SUBMIT YOUR NEWS

News for consideration is always welcome! [Submit your news here.](#)

CONTACT CRepHS

Visit our website at <https://reproductivesciences.wustl.edu/> or email questions and feedback related to CRepHS to audreyj@wustl.edu.

About CRepHS

The [Center for Reproductive Health Sciences](#) (CRepHS) aims to improve the overall health of women and men by making reproductive health a priority in investigative and translational science. As the basic science division of Washington University School of Medicine's [Department of Obstetrics and Gynecology](#), CRepHS' research productivity is accomplished through highly collaborative interdisciplinary lab environments.

The Center's current research emphasis includes basic biology of reproductive health; multiple approaches to developmental biology with concentrations in cell biology, animal models, and genetics; studies of healthy human development; developmental endocrinology; neurosciences; translational imaging; medical device development; reproductive cancers; and population health research.