

CRepHS Newsletter

February 2022

ADVOCATING AND CONNECTING THROUGH RENEWED WAYS

Dear CRepHS personnel and associates,

Our newly recommenced CRepHS Newsletter will help us stay connected during a time when social distancing seems more pronounced than ever. I look forward to utilizing this quarterly publication to announce individual and team accomplishments, research breakthroughs, special events, personnel updates, and more.

Our research feats continue to develop despite the pandemic-fueled challenges that affect us at labs, offices, classrooms and homes. Take a moment to recognize all that is being accomplished, and continue to bring forth competence, curiosity and compassion as we advance into this new year.

Additionally, if you have suggestions on ways to continue to stay connected during these times of isolation, I would love to hear your thoughts.

Wishing you all a healthy and successful 2022!



Sarah K. England, PhD
*Alan A. and Edith L. Wolff Professor of Medicine
Vice Chair of Research and Professor,
Department of Obstetrics and Gynecology*

IN THIS ISSUE

PERSONNEL UPDATE →

UPCOMING EVENTS →

SCIENTIFIC ACCOMPLISHMENTS →

SOCIAL MEDIA →

SUBMITTING NEWS →

CENTER INFORMATION →

Next issue: May 2022

PERSONNEL UPDATE

(from previous fiscal quarter and current)

NEW HIRES

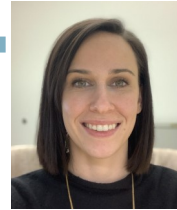
Rachel Abbott
 Sr. Clinical Research Coordinator
Gynecologic Oncology Translational Research



Shweta Bhagwat, PhD
 Postdoctoral Research Associate
Santi Lab



Audrey Johnston, MBA
 Manager, Administrative Services
Administrative Support



Maria Emilia (Mili) Polo
 Research Technician I
Santi Lab



Kirsten Wilson
 Administrative Coordinator
Administrative Support



PROMOTIONS

Bisi Fashemi, PhD
 Postdoctoral Research Associate
Khabele Lab

Elena Lomonosova, PhD
 Senior Scientist
Fuh Lab

Deborah Frank, PhD
 Senior Scientific Editor

Carrie Westphal, MAT
 Clinical Research Financial Analyst



PERSONNEL UPDATE

(from previous fiscal quarter and current)


JOB OPPORTUNITIES

- [Staff Scientist](#) — Mullen Lab
- [Clinical Laboratory Technician](#) — Gyn Onc Biobank
- [Research Assistant](#) — England Lab



Maggie Mullen, MD
Gynecologic Oncolo

Photo credit: Matt Miller/Washington University School of Medicine



We seek people from diverse backgrounds to join us in a supportive environment that encourages boldness, inclusion and creativity.

Find more information and other jobs at <https://jobs.wustl.edu/>

Photo credit: Tara Stetler

UPCOMING EVENTS

March 15-19: Annual Meeting of the SRI

May 3-4: Rothman Research Day

Receive the Zoom meeting link by registering [here](#):



CRepHS Seminar Series

Held in collaboration with the Center for Women's Infectious Disease Research (cWIDR) on Fridays, 9-10 a.m.

DATE	SPEAKER	AFFILIATION	HOST/LAB
Feb. 4th	Juan Ferreira, PhD / Max Lyon	Washington University	Santi
Feb. 11th	Christine O'Brien, PhD	Washington University	Frolova
Feb. 18th	Nima Aghaeepour, PhD	Stanford University	England
Feb. 25th	Anna Powell, MD	Johns Hopkins University	Khabele
March 4th	Paul Campagnola, PhD	University of Wisconsin	Fuh
March 11th	Society for Reproductive Investigation (SRI) meeting practice		
March 25th	John Yeh, MD	University of Massachusetts	Wang
April 1st	Megan Baldrige, MD, PhD	Washington University	cWIDR
April 8th	Arvind Palanisamy, MD	Washington University	Frolova
April 15th	Lindsey Kent, PhD	Washington University	England
April 22nd	Frolova Lab	Washington University	Frolova
April 29th	Sicheng Wang	Washington University	Wang
May 13th	Khabele Lab	Washington University	Khabele
May 27th	Hakan Cakmak, MD	UCSF	England
June 3rd	Favour Akinjiyan / Angela Schab	Washington University	Fuh

Seminar information is subject to change. View more details at <https://reproductivesciences.wustl.edu/news-events/crephs-seminar-series/>

SCIENTIFIC ACCOMPLISHMENTS

(from previous fiscal quarter and current)

AWARDS & APPOINTMENTS

- **Sarah England** was presented the “Distinguished Faculty Award” from Washington University School of Medicine in November 2021. The [Distinguished Faculty Awards](#) recognize outstanding commitment to the intellectual and personal development of students.
- **Yong Wang** received two research grants from the Bill & Melinda Gates Foundation in November 2021. As reported in a recent Washington University [news release](#), one grant “is to help develop a portable, bedside EMMI system suitable for multisite clinical trials and commercialization. The other grant will support EMMI’s novel applications to image and understand the role of uterine contractions associated with different phases of the menstrual cycle, with the goal of learning more about abnormal uterine bleeding related to ovulation dysfunction and infertility.” He also received an [ICTS](#) grant to study uterine peristalsis in women with normal menstrual cycle and in women who suffer from endometriosis. Wang states, “This essential development will greatly enhance our ability to conduct future studies to better understand and treat endometriosis, dysmenorrhea, and infertility.”
- On Dec. 3, 2021, **Maggie Mullen** was awarded the “Best 2021 Oral Presentation” at Washington University in St. Louis School of Medicine’s DNA Metabolism and Repair (DMR) Seminar Series. Her presentation topic was “GAS6/AXL inhibition enhances ovarian cancer sensitivity to carboplatin and olaparib through increased DNA damage and enhanced replication stress.” Mullen also was recently appointed to the Society of Gynecologic Oncology (SGO) Publications Committee (Member) and the Gynecologic Oncology Reports Editorial Board.

PRESENTATIONS

- **Lindsey Kent** presented at the Society for the Study of Reproduction meeting in December 2021. The title of her poster was “NALCN and accessory gene expression in human and mouse myometrium” and authors were Lindsey N. Kent, Juan J. Ferreira, Mashal Naqvi, Sophia G. Weil, Celia M. Santi and Sarah K. England.
- **Juan J. Ferreira**, graduate student in the DBBS Neurosciences program and Santi Lab, defended his thesis “SLO2.1 channels: a new molecular mechanism to regulate uterine excitability” on Jan. 20, 2022.



Photo credit: Matt Miller/Washington University School of Medicine

SCIENTIFIC ACCOMPLISHMENTS

(from previous fiscal quarter and current)

PUBLICATIONS*

- [SLO2.1/NALCN a sodium signaling complex that regulates uterine activity](#). Ferreira JJ, Amazu C, Puga-Molina LC, Ma X, **England SK**, **Santi CM**. iScience. 2021 Oct 2;24(11):103210. doi: 10.1016/j.isci.2021.103210. PMID: 34746693; PMCID: PMC8551532.
- [Promotion of gender equity in obstetrics and gynecology: principles and practices for academic leaders](#). Brubaker L, Marsh E, Cedars MI, Fenner D, Murtha A, Goff B, **Khabele D**. Am J Obstet Gynecol. 2021 Oct 2:S0002-9378(21)01085-1. doi: 10.1016/j.ajog.2021.09.035. Epub ahead of print. PMID: 34610320.
- [GAS6/AXL Inhibition Enhances Ovarian Cancer Sensitivity to Chemotherapy and PARP Inhibition through Increased DNA Damage and Enhanced Replication Stress](#). **Mullen MM**, Lomonosova E, Toboni MD, Oplt A, Cybulla E, Blachut B, Zhao P, Noia H, Wilke D, Rankin EB, Kuroki LM, Hagemann AR, Hagemann IS, McCourt CK, Thaker PH, Mutch DG, Powell MA, Mosammaparast N, Vindigni A, **Fuh KC**. Mol Cancer Res. 2021 Oct 20. doi: 10.1158/1541-7786.MCR-21-0302. Epub ahead of print. PMID: 34670865.
- [Increased mitochondrial activity upon CatSper channel activation is required for mouse sperm capacitation](#). Ferreira JJ, Cassina A, Irigoyen P, Ford M, Pietroroia S, Peramsetty N, Radi R, **Santi CM**, Sapiro R. Redox Biol. 2021 Nov 1;48:102176. doi: 10.1016/j.redox.2021.102176. Epub ahead of print. PMID: 34753004; PMCID: PMC8585656.
- [Blocking the BKCa channel induces NF-κB nuclear translocation by increasing nuclear calcium concentration](#). Kent LN, Li YE, Wakle-Prabakaran M, Naqvi MZ, Weil SG, **England SK**. Biol Reprod. 2021 Nov 15:ioab211. doi: 10.1093/biolre/ioab211. Epub ahead of print. PMID: 34791046.
- [Inhibition of AXL and VEGF-A Has Improved Therapeutic Efficacy in Uterine Serous Cancer](#). Toboni MD, Lomonosova E, Bruce SF, Tankou JI, **Mullen MM**, Schab A, Oplt A, Noia H, Wilke D, Kuroki LM, Hagemann AR, McCourt CK, Thaker PH, Powell MA, **Khabele D**, Mutch DG, **Fuh KC**. Cancers (Basel). 2021 Nov 23;13(23):5877. doi: 10.3390/cancers13235877. PMID: 34884986; PMCID: PMC8656641.
- [Panobinostat enhances olaparib efficacy by modifying expression of homologous recombination repair and immune transcripts in ovarian cancer](#). Wilson AJ, Gupta VG, Liu Q, Yull F, Crispens MA, **Khabele D**. Neoplasia. 2022 Feb;24(2):63-75. doi: 10.1016/j.neo.2021.12.002. Epub 2021 Dec 20. PMID: 34933276; PMCID: PMC8702851.
- [Impact of the COVID-19 pandemic on referral to and delivery of gynecologic oncology care](#). Bruce SF, Huysman B, Bharucha J, Massad LS, **Mullen MM**, Hagemann AR, **Fuh KC**, McCourt CK, Thaker PH, **Khabele D**, Powell MA, Mutch DG, Kuroki LM. Gynecol Oncol Rep. 2022 Feb;39:100928. doi: 10.1016/j.gore.2022.100928. Epub 2022 Jan 7. PMID: 35024405; PMCID: PMC8739812.



*Labs in bold.

SOCIAL CONNECTIONS



Twitter

[@DKhabeleMD](https://twitter.com/DKhabeleMD)

[@Englandsk785](https://twitter.com/Englandsk785)

[@Fuh_Lab](https://twitter.com/Fuh_Lab)

[@santi_lab](https://twitter.com/santi_lab)

[@WashU_OBGYN](https://twitter.com/WashU_OBGYN)

[@yongwangwashu](https://twitter.com/yongwangwashu)



Instagram

[@england.sk](https://www.instagram.com/england.sk)

[@washu](https://www.instagram.com/washu)

[@washumedicine](https://www.instagram.com/washumedicine)

[@washuobgyn](https://www.instagram.com/washuobgyn)

SUBMIT YOUR NEWS

News for consideration is always welcome! Email ejulie@wustl.edu by April 22, 2022, to have your news and information considered for the next edition of the CRepHS Newsletter.

CONTACT CRepHS

Visit our website at <https://reproductivesciences.wustl.edu/> or email questions and feedback related to CRepHS to audreyj@wustl.edu.

About CRepHS

The [Center for Reproductive Health Sciences](#) (CRepHS) aims to improve the overall health of women and men by making reproductive health a priority in investigative and translational science. As the basic science division of Washington University School of Medicine's [Department of Obstetrics and Gynecology](#), CRepHS' research productivity is accomplished through highly collaborative interdisciplinary lab environments.

The Center's current research emphasis includes basic biology of reproductive health; multiple approaches to developmental biology with concentrations in cell biology, animal models, and genetics; studies of healthy human development; developmental endocrinology; neurosciences; translational imaging; medical device development; reproductive cancers; and population health research.